

scanning accuracy
up to **0.0183 mm**

 EVIXSCAN 3D



 EVIXSCAN 3D

Heavy Duty Optima

High-precision 3D scanning of small and medium size objects

Heavy body construction enables scanning in variable environment. High point density is helpful for scanning of small, medium and detailed objects.

Useful for: contactless quality inspection, reverse engineering and rapid prototyping.

- Cameras: 2 x 5 megapixel
- Accuracy: **0.0183 mm**
- Light-source: **Blue LED**
- ToolKit Box support
- IP 31

- Set includes:
eviXscan Suite, tripod, calibration plate,
transport hardcase

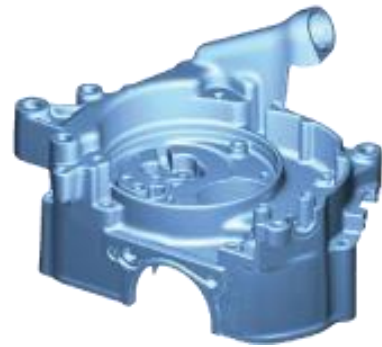
 **evatronix**
designed by

Evatronix SA

Wiktora Przybyły 2, 43-300 Bielsko-Biała, Poland

www.evatronix.com · www.evixscan3d.com · scanners3d@evatronix.com · +48 33 499 59 11

We're ready to solve most common and time consuming engineering problems, like a measurement of objects with areas hard to access: freeforms, pockets, threadedholes, numerous ribs, angles... for quality control



We made this gearbox housing STL model in just 45 minutes

Heavy Duty Optima

Light-source	Blue LED
Cameras	2 x 5 Mpix
Accuracy	*up to 0.0183 mm
Scanning time	5 seconds
Measuring ranges	250 x 170 x 120 mm
Points density	116 pt/mm ²
Software	eviXscan 3D Suite
Export formats	stl, ply, obj, asc, bin
Computer requirements	Windows 7 (64-bit), 16 GB RAM, CPU i5
Computer connection	USB 3.0 and HDMI

*Accuracy determined with the use of the standard DE VDI / VDE 2634, Part 2, 4.1 Ps



We are an authorized 3D Systems partner
eviXscan software is integrated
with Geomagic® DesignX™ and Geomagic® ControlX™