

scanning accuracy
up to **0.013 mm**



Heavy Duty Quadro

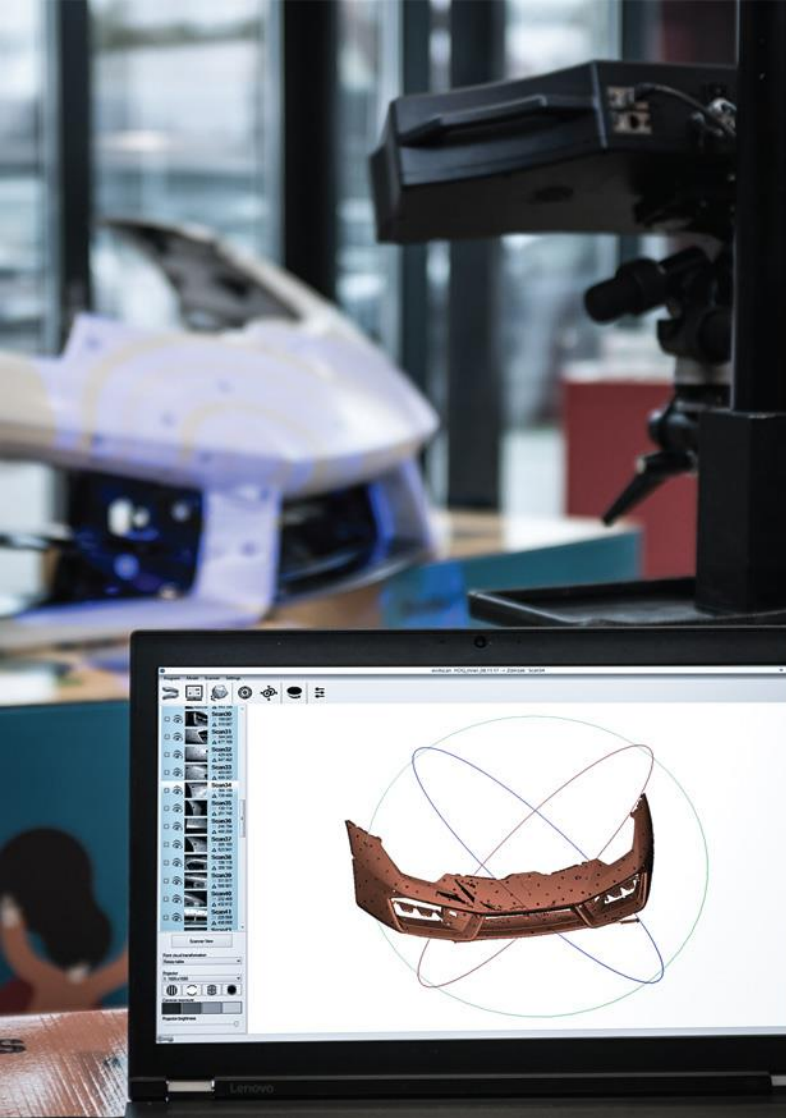
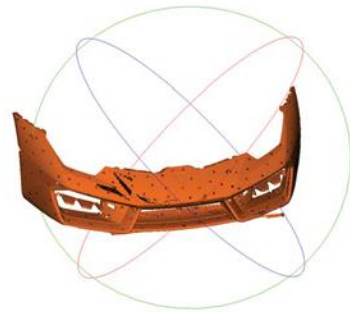
Versatile 3D scanning in harsh environment

Aluminium body and carbon fiber beam on Heavy Duty Quadro guarantees precise measurements in harsh environment. Two ranges enable to scan objects of different dimensions: from a few centimeters to several meters.

Useful for: contactless quality inspection, reverse engineering and rapid prototyping.

- Cameras: 4 x 5 megapixel
- Accuracy: **0.013 mm**
- Light-source: **R/G/B LED**
- 2 measuring ranges
- ToolKit Box support
- IP 62
- Laser trackers
- Set includes:
eviXscan Suite, tripod, calibration plate,
transport hardcase

Shapers Advanced Design Studio uses
Heavy Duty Quadro for acceleration supercars
redesign process



Heavy Duty Quadro

Light-source	R/G/B LED
Cameras	4 x 5 Mpix
Accuracy	*up to 0.013 mm
Scanning time	5 seconds
Measuring ranges	370 x 265 x 150 mm / 210 x 145 x 90 mm
Points density	50 pt/mm ² / 161 pt/mm ²
Software	eviXscan 3D Suite
Export formats	stl, ply, obj, asc, bin
Computer requirements	Windows 7 (64-bit), 16 GB RAM, CPU i5
Computer connection	USB 3.0 and HDMI

*Accuracy determined with the use of the standard DE VDI / VDE 2634, Part 2, 4.1 Ps



We are an authorized 3D Systems partner
eviXscan software is integrated
with Geomagic® DesignX™ and Geomagic® ControlX™